

Expert Know-How extraction



Philipp Thomann
D ONE - Senior Consultant
philipp.thomann@d-one.ai



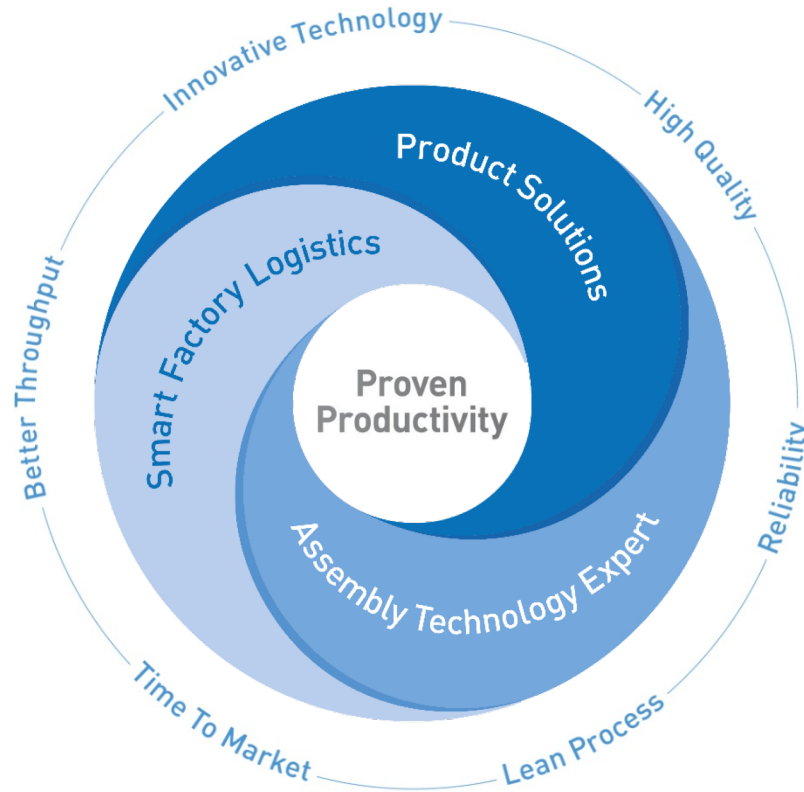
Urs Güttinger
Bossard AG - CTO
uguettinger@bossard.com



- International Trading-, Engineering- and Logistics-Company for fasterner technology
- Headquarter Zug, Switzerland
- 30 Countries – 80 locations worldwide
- 2500 employees

THE STRATEGY OF SUCCESS

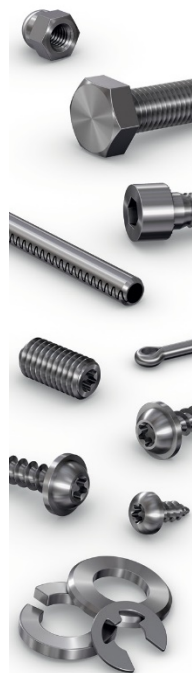
MAKING OUR CUSTOMERS MORE COMPETITIVE



PRODUCT SOLUTIONS

BOSSARD NORM

BOSSARD



Anwendungshinweise, Index	Indications d'utilisation, Index	Avvertenze, indice	
Innensechskant- und Innensechskant-Schrauben	Vis à six pans creux et à six lobes internes	Viti con esagono incassato e con caveo all'interno	
Sechskantschrauben	Vis à tête hexagonale	Viti a testa esagonale	
Muttern, Gewindestülpe	Ecrou, douille filetés	Dadi, inserti filetati	
Großschrauben, Dübel	Vis exécution grossière, chevilles	Bulloni grossolani, tasselli	
Schütz-, Kreuzschütz-, Kombischrauben	Vis à fente, vis à empreinte cruciforme, vis combinées	Viti con intaglio, viti con impronta a croce, viti con rosetta preassemblata	
Gedrehte Schrauben, Gewindestangen, Gewindestifte, Schlauchdübel	Vis décollées, tiges filetés, vis sans tête, colliers de serrage	Viti forate, barre filetate, viti senza testa, baccette stringitubo	
Scheiben, Sicherungselemente	Pondelles, éléments de sécurité	Rosette, elementi di sicurezza	
Stifte, Niete, Kette	Goupilles, rivets, clavettes	Spine, rivetti, linguette	
Blechschrauben, Bohrschrauben, gewindestiellose Schrauben	Vis à tôle, vis autoperceuses, vis autotornantes	Viti autofilettanti, viti autoperforanti, viti autotornanti	
Holzschrauben	Vis à bois	Viti per legno	
Verbindungselemente aus INOX	Éléments d'assemblages en INOX	Elementi di collegamento in INOX	
Verbindungselemente aus diversen Werkstoffen	Éléments d'assemblage en divers matériaux	Elementi di collegamento in altri materiali	
Beschichtungen	Revêtements	Trattamenti	
Technische Informationen	Informations techniques	Informazioni tecniche	



BRAND PRODUCT PARTNERS

NORD-LOCK
Bolt securing system

elesa

EJOT

EMHART
TEKNOLOGIES

PANDUIT


Richco

NYLTITE

SPAX

Marutex

VERBUS-RIPP®

**Kerb
Konus** 

MIKALOR


ALCOA

 **DEJOND**
COLD FORMING


J.Lanfranco

HEYCO

 **SPIROL**

PEM

OVERVIEW OF PRODUCTS



Quick release pins
and spring
plungers



Bonding fasteners



Only CH

Construction
fasteners



Blind rivet nuts



Blind rivet
technology



Only CH / AT

Stud welding
systems



Sealing
Technology



Industrial Screw
Technology



Only DE / AT

Pressure
intensifiers



Self-clinching
fasteners



Thread inserts



Only CH / AT

Adhesives and
sealants



Only DE / CH

Quick connectors



Quick fastening
elements and clips



Lock nuts



Only CH

Special processes



Installation
equipment



Access solutions

A close-up, shallow depth-of-field photograph of an industrial fastening machine. The machine's head, which is black and cylindrical, is positioned at the top, with a dense array of small, glowing red nozzles or pins visible. Below the head, a complex, silver-colored metal workpiece is being processed. To the right of the workpiece, a separate, cylindrical metal component with a flange is visible. The background is a bright, out-of-focus industrial setting.

More than
1,000,000
different **fastening**
solutions available

How can we help our people to find
the right product solution for our
customers?

PRODUCT SOLUTION

- This is simple!
 - Build up a Knowledge Base
 - Set up a few Decisions Trees
- We tried this several times
 - To complex and cumbersome





Product Solution Advisor

IDEA

PRODUCT SOLUTION ADVISOR

- Have a AI based «Product Solution Advisor»
- Has the KVT/Bossard knowledge
- Structure customers problems
- Relates to similar solutions
- Guides Engineers to the solution

ADVANTAGES

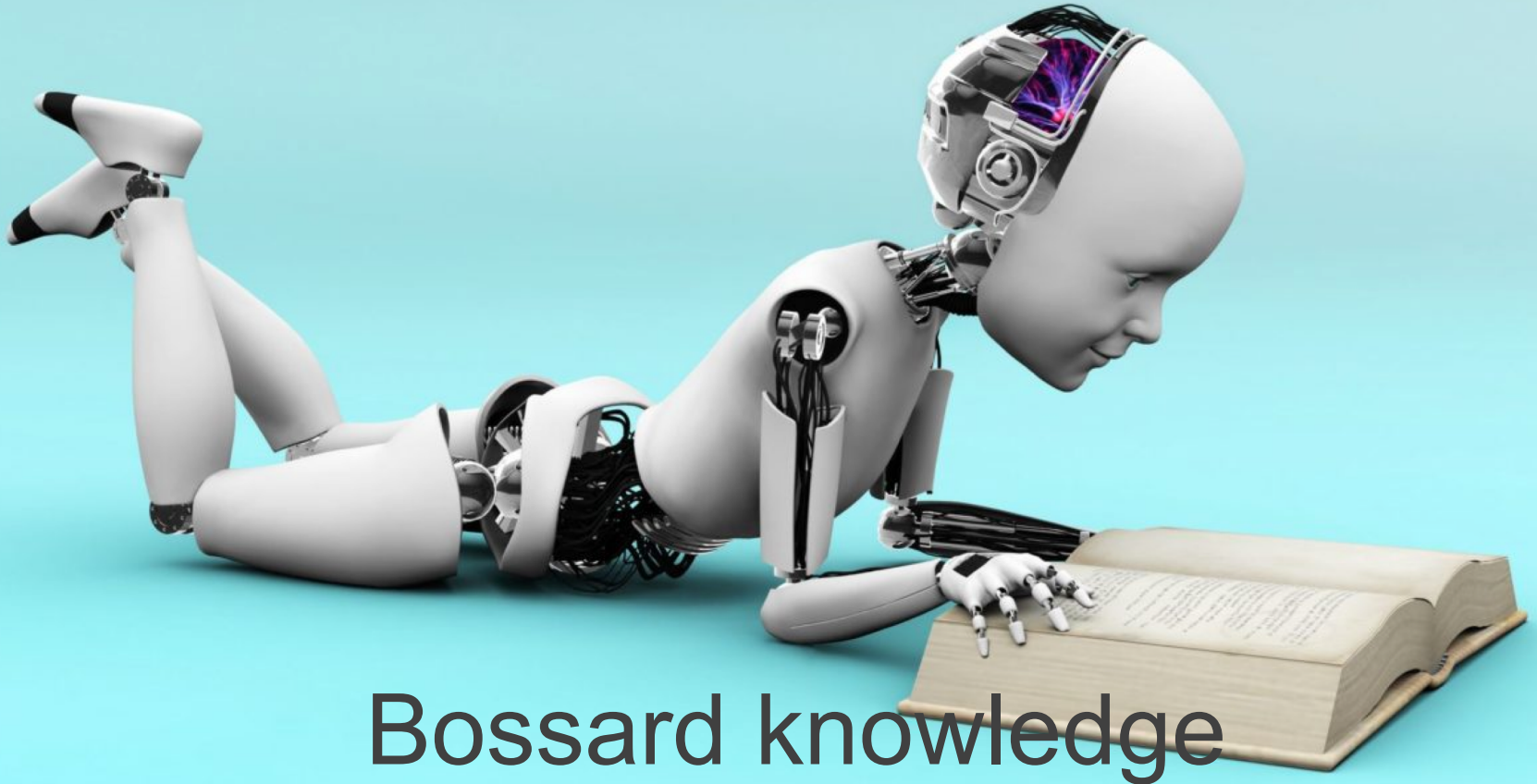
PRODUCT SOLUTION ADVISOR

- Standard / repetitive solutions could be found by less qualified consultant
- High qualified experts focus on new solutions
 - Which will be trained to the AI
- New engineers are “trained” faster
- Knowledge is in the AI
 - (In case an expert leaves the company)

Goal:

Bossard has a system that manages the product knowledge and make it available to employees efficiently in "real time".

How to train the AI with the



Bossard knowledge

DATA SOURCES

PRODUCT SOLUTION ADVISOR

- ERP / Assortment Data
- CRM
- FAQ of Account-Team
- Supplier questionnaire
- KTGx Project Control
- Stars - success stories
- e-shop

Dear D-ONE

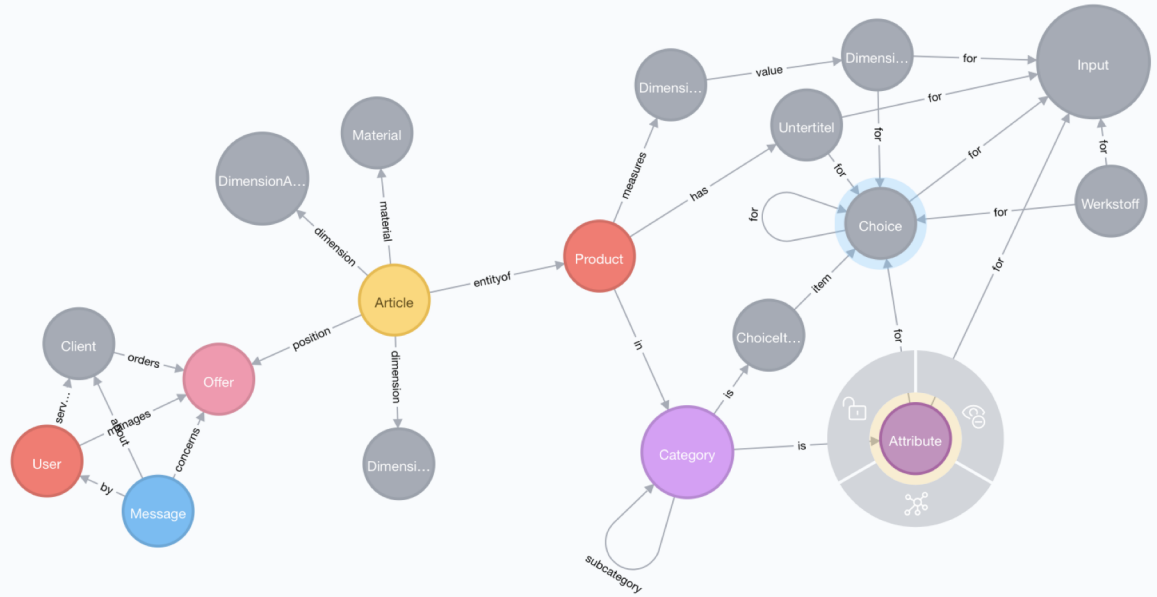
Can you collect the Bossard knowledge and teach it to an artificial intelligence?

JOURNEY

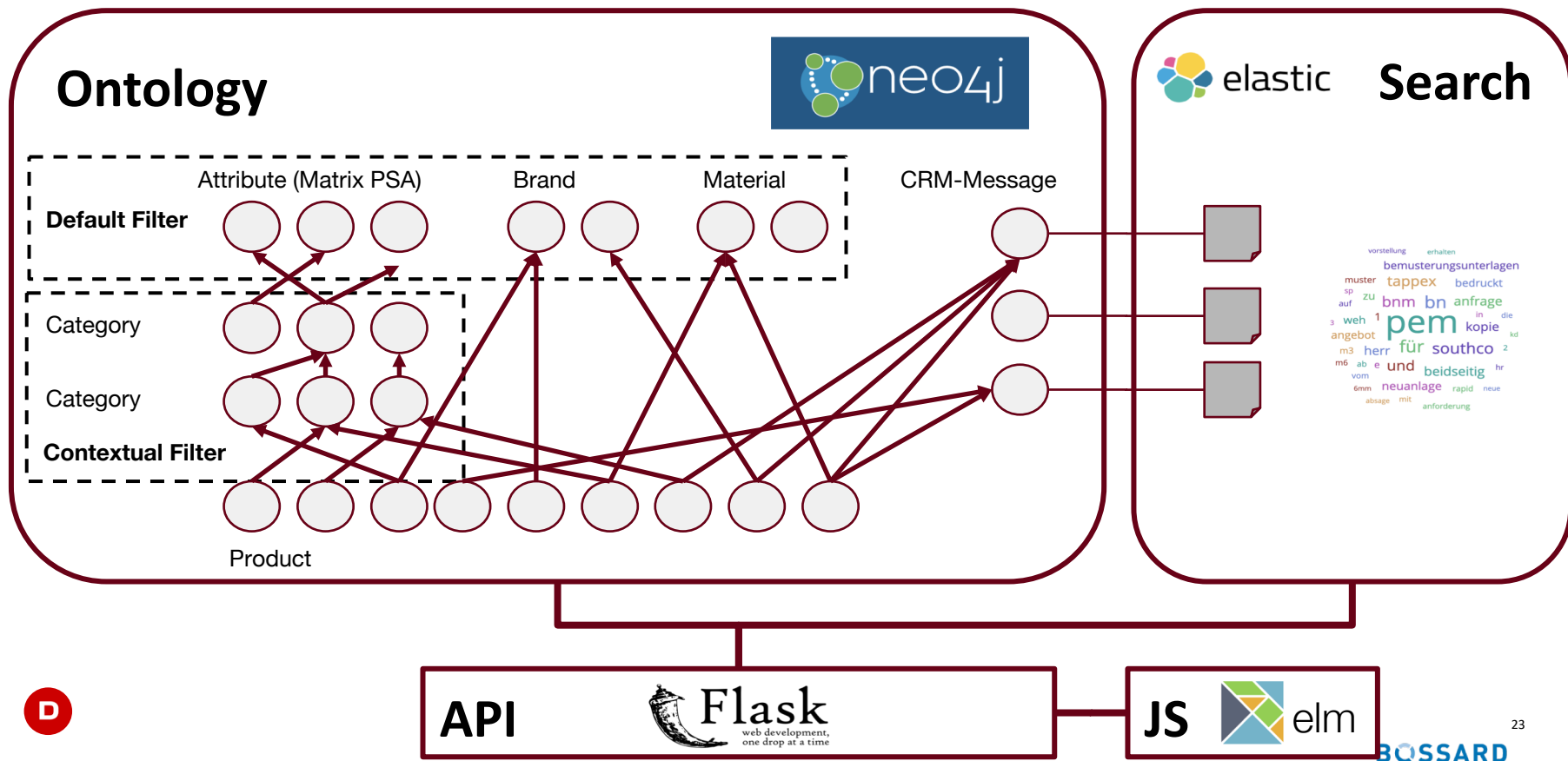
- Kick Off: Tutorial in AI for Bossard project team
- Workshops: scope, goals, how to shape expert knowledge, what data to use, etc.
- Iterations of the Ontology
- Creation of UI
- Meeting at KVT Germany with users
- Go live with pilot phase



- Product, Article
- Product-Hierarchy
⇒ Category
- Dimensions
- Material
- Offers
- CRM-messages
- Expert Knowledge
⇒ Attribute, Choice



APPLICATION ARCHITECTURE



EXPERT KNOWLEDGE

■ Matrix:

Stufe 3: Product Group	Stufe 4: Product Family	Brand	Brand Type	Materialien verbinden	Einseitige Zugänglichkeit	Beidseitige Zugänglichkeit	Demontierbar	Lösbar	Vibrations- beständig
10110113 (113 Cover caps)	10110113147 (147 Accessories)								
10110120 (120 Lock bolts)	10110120164 (164 High-strength)	Huck®	BobTail®	x		x	x		x
10110120 (120 Lock bolts)	10110120164 (164 High-strength)	Huck®	Magna-Grip®	x		x			x
10110120 (120 Lock bolts)	10110120164 (164 High-strength)	Huck®	C50L®	x		x	x		x
10110120 (120 Lock bolts)	10110120164 (164 High-strength)	Huck®	C6L®	x		x			x
10110120 (120 Lock bolts)	10110120164 (164 High-strength)	Huck®	C120L	x		x			x
10110120 (120 Lock bolts)	10110120164 (164 High-strength)	AVDEL®	Maxlok®	x		x			x
10110132 (132 Blind rivet nuts)	10110132134 (134 Assortment box)	TUBTARA®		x	x	x			
10110132 (132 Blind rivet nuts)	10110132164 (164 High-strength)	TUBTARA®		x	x	x			x
10110132 (132 Blind rivet nuts)	10110132164 (164 High-strength)	ecosyn®-BCT		x	x	x			x
10110132 (132 Blind rivet nuts)	10110132186 (186 Open end)	AVDEL®	Hexsert®	x	x	x			
10110132 (132 Blind rivet nuts)	10110132186 (186 Open end)	AVDEL®	Nutsert®-TS	x	x	x			
10110132 (132 Blind rivet nuts)	10110132186 (186 Open end)	AVK®		x	x	x			
10110132 (132 Blind rivet nuts)	10110132186 (186 Open end)	FASTEKS®	FILKO	x	x	x			
10110132 (132 Blind rivet nuts)	10110132187 (187 Closed end)	TUBTARA®		x	x	x			
10110132 (132 Blind rivet nuts)	10110132187 (187 Closed end)	FASTEKS®	FILKO	x	x	x			
10110132 (132 Blind rivet nuts)	10110132187 (187 Closed end)	AVK®		x	x	x			

■ Rule based:

e.g. Korrosionssicher ⇔ Material in { Edelstahl, Monel }

KNOWLEDGE INFERENCE

Ranking of Results

- Graph-Centrality

CRM-Messages

- Word2Vec for synonyms
- "Mentions" of Products, Attributes, Dimensions, ...
- Named Entity Extraction

Offers

- Product-Embeddings, Customer-Embeddings
- Recommendations

Usage of the ProductSolutionAdvisor



Learnings

WELL ACCEPTED

PRODUCT SOLUTION ADVISOR

- The Product Solution Advisor is well accepted
 - Engineer's
 - Account Management Team
- People are willing to accept “small” inaccuracies
- People are open to share the knowledge with D-ONE/AI

CHALLENGES AND OBSTACLES

PRODUCT SOLUTION ADVISOR

- The more accurate we can search, the more data errors and data inconsistencies will be found
 - Typing errors or missing attributes (Product Name “None”)
 - Different wording for same attribute
 - Missing data
 - Not structured data

CHALLENGES AND OBSTACLES

PRODUCT SOLUTION ADVISOR

- There is no single point of truth for Product Data



ERP Data

- Master Data Standardized
- Compressed Dimensions
- No Product/BN Specific Data

Catalog Data (Assortment)

- Only „Group“ Assortment
- No Specials
- Optimized for print catalog

E-Shop Data

- Additional Data
- Optimized for e-Shop

CHALLENGES AND OBSTACLES

PRODUCT SOLUTION ADVISOR

- Never Ending Story
 - Der Hunger kommt mit dem essen
 - Hunger comes with eating
 - 1'000'000 data set => you always could improve it
 - More attributes
 - you will find additional attributes
 - By combination you can create new attributes
 -

NEXT STEPS

PRODUCT SOLUTION ADVISOR

- Increase granularity of Ontology
- Optimize data sources
- More user test
- Rollout to more departments
 - Quality before speed

